

# Expanding Risk-adapted Early Detection of Prostate Cancer: A Call to Action for Men at High Risk

Maike K. Klett, Peter Albers, Adam Kibel, Jale Lakes, Huma Q. Rana, Michael Serzan, André Karger, Alicia K. Morgans

Article - Version of Record

Suggested Citation:

Klett, Maike, Albers, P., Kibel, A., Lakes, J., Rana, H. Q., Serzan, M., Karger, A., & Morgans, A. K. (2026). Expanding Risk-adapted Early Detection of Prostate Cancer: A Call to Action for Men at High Risk. *European Urology Oncology*, 9(3), 710–716. <https://doi.org/10.1016/j.euo.2026.01.012>

Wissen, wo das Wissen ist.

This version is available at:

URN: <https://nbn-resolving.org/urn:nbn:de:hbz:061-20260707-112111-1>

Terms of Use:

This work is licensed under the Creative Commons Attribution 4.0 International License.

For more information see: <https://creativecommons.org/licenses/by/4.0>



available at [www.sciencedirect.com](http://www.sciencedirect.com)  
journal homepage: [euoncology.europeanurology.com](http://euoncology.europeanurology.com)



New Frontiers in Oncology

## Expanding Risk-adapted Early Detection of Prostate Cancer: A Call to Action for Men at High Risk

Maïke K. Klett<sup>a,b,c,\*</sup>, Peter Albers<sup>b,d,e</sup>, Adam Kibel<sup>c,f</sup>, Jale Lakes<sup>b,d</sup>, Huma Q. Rana<sup>c</sup>, Michael Serzan<sup>c</sup>, André Karger<sup>a,b</sup>, Alicia K. Morgans<sup>c</sup>

<sup>a</sup> Clinical Institute of Psychosomatic Medicine and Psychotherapy, Medical Faculty and University Hospital Düsseldorf, Heinrich-Heine-University Düsseldorf, Düsseldorf, Germany; <sup>b</sup> Center for Integrated Oncology Aachen/Bonn/Cologne/Düsseldorf, Düsseldorf, Germany; <sup>c</sup> Dana-Farber Cancer Institute, Harvard Medical School, Boston, MA, USA; <sup>d</sup> Department of Urology, Medical Faculty and University Hospital Düsseldorf, Heinrich-Heine-University Düsseldorf, Düsseldorf, Germany; <sup>e</sup> Division of Personalized Early Detection of Prostate Cancer, German Cancer Research Center, Heidelberg, Germany; <sup>f</sup> Department of Urology, Mass General Brigham, Harvard Medical School, Boston MA, USA

### Article info

#### Article history:

Received 24 November 2025  
Received in revised form 13  
January 2026  
Accepted January 30, 2026

© 2026 The Author(s). Published by Elsevier B.V. on behalf of European Association of Urology. This is an open access article under the CC BY license (<http://creativecommons.org/licenses/by/4.0/>).

#### Editor-in-Chief:

Morgan Rouprêt

### 1. Introduction

Early detection of clinically significant prostate cancer (PCa) poses a major challenge worldwide. Widespread opportunistic screening has led to overdiagnosis and overtreatment, especially among men aged >70 yr, which results in unnecessary costs and patient burden with only a limited cancer-specific survival benefit in the general population [1–4]. Current PCa screening strategies remain insufficient for individuals at elevated PCa risk, particularly those with heritable risk.

Identification of those at high risk via an individualized risk assessment strategy is essential for early detection of

clinically significant PCa, especially as ~57% of PCa risk is attributable to inherited genetic factors [5]. Both a family history of PCa and pathogenic germline variants (PGVs) have been associated with higher PCa incidence and mortality, earlier disease onset, and more aggressive tumor phenotypes [6–8]. Recent advances in genetic research, particularly the identification of single-nucleotide polymorphisms (SNPs), have led to the development of polygenic risk scores (PRS) to refine risk prediction [9,10]. Ancestry is another important but often under-represented modifier of PCa risk [11,12].

While risk-adapted strategies for early detection have been successfully implemented in other cancer types, most notably in breast and ovarian cancer, genetic testing and

\* Corresponding author at: Clinical Institute of Psychosomatic Medicine and Psychotherapy, Medical Faculty and University Hospital Düsseldorf, Heinrich-Heine-University Düsseldorf, Moorenstr. 5, 40225 Düsseldorf, Germany.  
E-mail address: [maike.klett@med.uni-duesseldorf.de](mailto:maike.klett@med.uni-duesseldorf.de) (M.K. Klett).

tailored screening for PCa have yet to be implemented despite guideline recommendations [13].

A shift towards structured, risk-adapted early detection of PCa is essential to: (1) minimize overdiagnosis and overtreatment in individuals with low PCa risk; and (2) improve early detection and survival among individuals with high PCa risk.

Broader access to genetic testing has implications beyond early detection. Genetic characteristics play a critical role in guiding treatment decisions, such as eligibility for targeted therapies (eg, PARP inhibitors in metastatic disease) and suitability for active surveillance [14–16]. With this call-to-action paper, our aim is to underscore the urgent need for structured, risk-adapted screening pathways for individuals at elevated risk of PCa, highlight current practice gaps, and set out clear recommendations for implementation.

## 2. Defining high-risk populations

PCa risk is multifactorial, with age, family history, hereditary syndromes, and ancestry well established as primary risk factors [17]. Among these, family history has been associated with higher risk of high-grade PCa and earlier onset of PCa [6,18]. The highest risk has been observed in men with first-degree relatives affected by PCa, and this risk is inversely associated with the age of onset in the family member [19,20]. Of note, family history of breast, ovarian, or colorectal cancer is also associated with higher PCa risk because of overlapping PGVs in DNA repair and mismatch repair pathways [18].

Familial PCa risk is driven in part by inherited PGVs, particularly in DNA repair genes such as the homologous recombination genes *BRCA1*, *BRCA2*, *HOXB13*, *ATM*, *CHEK2*, *PALB2*, *TP53*, *RAD51*, and *NBN*, and the mismatch repair genes associated with Lynch syndrome (*MLH1*, *MSH2*, *MSH6*, *PMS2*, and *EPCAM*) [21,22]. PGVs in *BRCA2* and *HOXB13* have been associated with the highest increase in PCa risk, with *BRCA2* PGVs also related to more aggressive PCa [23–26]. PGV prevalence is related to PCa aggressiveness, with prevalence ranging from 4.6% in localized disease to 11.8% in metastatic and 16.2% in metastatic castration-resistant PCa [27–29]. Nicolosi et al [30] reported a PGV rate of 17.2% among individuals with a history of PCa irrespective of disease stage (rates per gene: *BRCA2* 4.74%, *CHEK2* 2.88%, *ATM* 2.03%, and *BRCA1* 1.25%). Importantly, 37% of PGVs occurred in individuals without a family history of PCa, which indicates the limitations of testing solely on the basis of family history [30].

Beyond high-penetrance PGVs, it has been shown that SNPs account for a substantial proportion of inherited PCa risk. Genome-wide association studies have revealed more than 451 SNPs associated with PCa [10,31], and their cumulative effect can be quantified using PRS. PRS use has been shown to improve the detection of clinically significant PCa in prospective studies, complementing magnetic resonance imaging (MRI) and prostate-specific antigen (PSA) testing [9]. However, current genetic testing is unlikely to capture all relevant genetic risk variants, with earlier PRS models based on 269 SNPs that capture only ~30–40% of familial relative risk [31]. Therefore, family history remains a separate risk factor in addition to genetic risk. A combination of famil-

ial risk, high PRS, and lifestyle factors is associated with three-fold higher risk of death from PCa before the age of 75 yr [32].

Ancestry further modifies risk. Black men in the USA face markedly elevated PCa incidence and mortality rates [33]. Genetic risk in men of African ancestry is on average 2.18-fold higher (95% CI 2.14–2.22) than in men of European ancestry, whereas men of East Asian ancestry have a 0.73-fold lower risk (95% CI 0.71–0.76) [31]. Germline variant prevalence also varies by ancestry, and is highest in Ashkenazi Jewish (22.7%) and White (17.8%) men, and lowest in African American (10.1%) and Hispanic (6.4%) men [30]. However, PCa incidence and mortality exhibit pronounced global disparities that are probably driven not only by biological but also by social determinants of health, such as health care availability and other social factors [34–36]. Non-White populations remain under-represented in research and germline testing guidelines, which results in a lower diagnostic yield and higher rates of variants of uncertain significance [37,38]. This highlights the urgent need for inclusive genomic data and ancestry-informed strategies for early detection [11,12].

## 3. Current care gaps

Despite growing evidence on the genetic and familial risk of PCa, clinical integration of risk-adapted early detection, and thus intensified screening for high-risk individuals, remains limited. In contrast to breast and ovarian cancer, for which risk assessment and screening programs are well established, significant gaps persist in PCa screening. Several studies have highlighted substantial gender disparities in the uptake of genetic testing between women with breast or ovarian cancer and men with PCa, as well as among their unaffected relatives, which results in missed opportunities for cascade testing and potential treatment adaptations [39–42]. Reasons discussed for the underutilization of genetic testing in men include limited awareness among patients and clinicians, and gender-related social roles, consistent with men's lower engagement in general preventive care [43–46]. Genetic test results are communicated to male relatives less often within families, probably because of underestimation of the relevance of female family history and germline variants for men [47–49]. In addition, men report difficulty in finding tailored information, which underscores the need for resources focused on male PCa risk [50,51].

Early detection of PCa remains largely opportunistic in many countries and is not yet targeted at the individuals who are at the highest risk [13]. This leads to skewed uptake of PSA testing, with higher use among wealthier, more educated men and lower uptake among minority groups [52,53]. Overdiagnosis and overtreatment, especially in men aged >70 yr, remain key harms, while the reduction in cancer-specific mortality is small [1,2,4]. By contrast, although guidelines recommend earlier screening in men at high risk of PCa, implementation is mostly confined to research studies [54,55]. Structured clinical screening pathways and guidance written for use by patients themselves still need to be developed. Furthermore, there is no consensus on the precise group of PGVs that are universally

deemed to be associated with high risk and included in intensified screening programs. Finally, insurance coverage for genetic testing varies greatly by region, which limits access even for those with explicit family histories.

One additional area in need of consideration is an evaluation of the potential psychosocial burden of genetic testing, particularly among men at high PCa risk, who remain under-represented in such studies. Prospective data from the IMPACT study showed low and largely stable psychosocial distress levels among *BRCA1/2* PGV carriers over time [56]. However, a subgroup of PGV carriers reported heightened distress. These individuals may benefit from tailored psychological screening and support structures, which are currently not implemented in regular care [57,58]. Therefore, genetic counseling approaches must address the individual situation of each patient and take into account the potential psychosocial burden of genetic testing. This also concerns psycho-oncological health care professionals, who are often the first contact point for patients experiencing psychosocial distress, but who may lack specific training in clinical issues related to genetic testing.

Addressing these care gaps in early detection of PCa will require multidisciplinary and political action. Governments are beginning to pilot risk-adapted strategies for early detection. For example, Sweden has launched a pilot screening program, and Germany has issued funding calls for the development and evaluation of risk-based screening algorithms [59]. The following section outlines evidence-based recommendations and current research efforts to expand early detection of PCa, with a particular focus on men at elevated risk.

#### 4. Expanding early detection of prostate cancer for men at elevated risk: recommendations

##### 4.1. Risk assessment, communication, and awareness

Low referral rates, information gaps, and lack of centralized access points limit genetic testing and risk-adapted screen-

ing for high-risk men. The establishment of defined screening pathways for use in primary care, proactive patient outreach programs, and patient navigation strategies is essential for successful implementation of high-risk PCa screening [60].

The first step is to define standardized criteria for genetic testing eligibility based on family history and hereditary risk, that include men with PCa. Current guidelines partly overlap, but also differ in definitions [22,54,55]. Standardization of these guidelines would improve the comparability of studies linking family history to PGVs. Routine risk assessment that includes ancestry and family history of PGVs and breast, ovarian, and colorectal cancers should be implemented in primary care to ensure application of these guidelines to all eligible patients. To facilitate standardized referral to genetic counseling from primary care, validated, easy-to-use tools are needed to assess familial cancer history and ancestry and to identify known genetic variants in a family (analogous to breast cancer tools [61] such as Helix Tool [62]). For men with PCa who meet genetic testing criteria (family history, metastatic disease), the treating urologist or oncologist should initiate referral at diagnosis and before treatment, as the results may affect the choice of therapy and trigger cascade testing [22,55]. Genetic counseling should involve shared decision-making and address ethical, legal, and social aspects.

For expansion of cascade testing, targeted provider and patient education should correct misconceptions and highlight the importance of PGVs, especially in *BRCA1/2*, for male relatives. Family letter templates should be offered to PGV carriers to support communication of test results and to provide information on access to genetic testing [63]. For patients, centralized information materials should be developed in lay language.

Any expansion of germline genetic testing must consider the potential financial burden and the limited availability of trained genetic professionals. Nevertheless, as testing costs continue to decline and resource-sparing models emerge, the value of germline testing is becoming increasingly evi-

**Table 1 – Example of risk-adapted screening as used in Germany for men at familial and hereditary risk of prostate cancer<sup>a</sup>**

Population and risk group	Recommended screening
<b>High-risk individuals aged <math>\geq 45</math> yr with no PGVs<sup>b</sup></b>	
Low risk <sup>c</sup>	PSA annually mpMRI if PSA rises at a rate $>0.7$ ng/ml/yr
Intermediate risk <sup>c</sup>	PSA annually mpMRI after 1 yr and then every 5 yr, or earlier if PSA rises at $>0.7$ ng/ml/yr
High risk <sup>c</sup>	MRI/ultrasound fusion biopsy. If the result is negative: – PSA annually – mpMRI after 1 yr and then every 5 yr, or earlier if PSA rises at $>0.7$ ng/ml/yr
<b>Individuals aged <math>\geq 40</math> yr with PGVs</b>	
Low risk <sup>c</sup>	PSA annually mpMRI after 1 yr and then every 5 yr, or earlier if PSA rises at $>0.7$ ng/ml/yr
Intermediate or high risk <sup>c</sup>	MRI/ultrasound fusion biopsy. If the result is negative: – PSA annually – mpMRI after 1 yr and then every 5 yr, or earlier if PSA rises at $>0.7$ ng/ml/yr

PGV = pathogenic germline variant (in *ATM*, *BRCA1*, *BRCA2*, *EPCAM*, *HOXB13*, *MLH1*, *MSH2*, *MSH6*, *PMS2*, *TP53*); PSA = prostate-specific antigen; mpMRI = multi-parametric magnetic resonance imaging; PI-RADS = Prostate Imaging-Reporting and Data System; ERSPC-RC 4 = European Randomized Study of Screening for Prostate Cancer risk calculator 4.

<sup>a</sup> Suggested algorithm for men at higher risk of prostate cancer on the basis of family history and/or PGV status. Risk stratification is based on baseline PSA and mpMRI results; the detailed algorithm has been described by Lakes et al [72] the starting age is based on the model described by Van Poppel et al [74].

<sup>b</sup> High PCa risk = family history or hereditary risk, Black/African ancestry.

<sup>c</sup> Low risk: PSA  $<3$  ng/ml and PI-RADS 1–2. Intermediate risk: PI-RADS 3 with ERSPC Risk Calculator 4 score of  $<12\%$  irrespective of PSA; or PSA  $\geq 3$  ng/ml and PI-RADS 1–2. High risk: PI-RADS 3 with ERSPC Risk Calculator 4 score of  $>12\%$ ; or PI-RADS 4–5, both irrespective of PSA. Restratification of risk only after performing MRI. If PI-RADS 4–5 is detected on MRI, MRI/ultrasound fusion biopsy or MRI in-bore biopsy is performed.

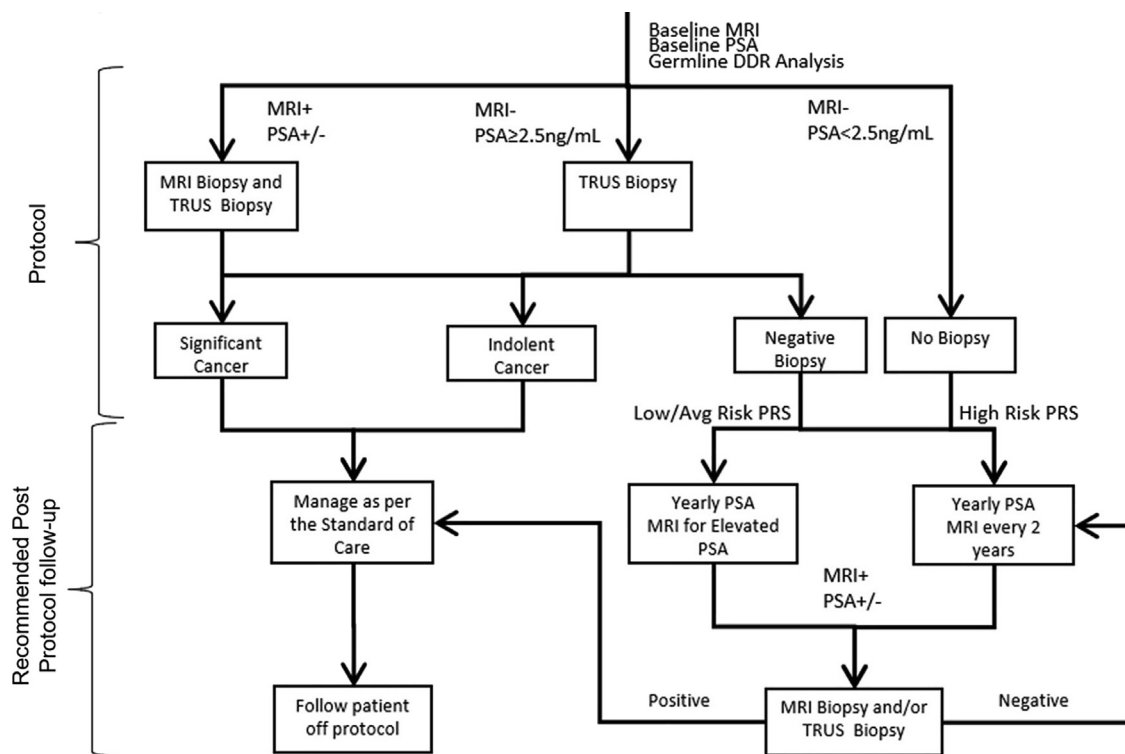


Fig. 1 – Example of a possible genetic risk-adapted screening protocol. PSA = prostate-specific antigen; MRI = magnetic resonance imaging; DDR = DNA damage response; TRUS = transrectal ultrasound; Avg = average; PRS = polygenic risk score.

dent when weighed against the potentially substantial costs associated with treating advanced PCa [30,64,65].

#### 4.2. Structured risk-adapted screening pathways

Implementation of risk-adapted screening pathways for high-risk men is crucial to balance sensitivity and overdiagnosis. Importantly, a negative germline test does not negate the need for intensified screening for men with a positive family history. Exact definitions of risk groups and which PGVs to include need to be established. Prospective trials have demonstrated the clinical utility of risk stratification based on baseline PSA with adjunct MRI in the general population [66–68]. However, in the context of emerging imaging modalities and biomarker-based approaches, the optimal risk-stratified screening strategy remains under investigation. Growing evidence on PRS and risk calculators may further refine risk stratification [69]. Even with the need for further validation of screening algorithms, men with high PCa risk need to be provided with recommendations regarding intensified screening [55,70,71].

Table 1 outlines a proposed screening pathway adapted from the first dedicated clinic for early detection of PCa in Germany, with trial validation pending (NCT05681416), that relies on baseline PSA testing and mpMRI for risk stratification in men with a family history of cancer or a PGV [72]. Figure 1 provides one example of a PCa screening pathway that includes a PRS currently under investigation in a clinical trial in the USA (NCT06398639). On the basis of recent evidence demonstrating the poor performance of digital rectal examination as a standalone screening tool for PCa, as well as the

lack of added benefit when combined with PSA screening, both recommendations rely on MRI and PSA to identify clinically relevant PCa that requires biopsy [73].

Importantly, adequate counseling and shared decision-making regarding the pros and cons of PSA testing and PCa screening are essential to ensure guideline compliance. To reduce disparities in PCa screening, policies to set up intensified, risk-adapted screening for high-risk men without additional out-of-pocket costs will be necessary. To facilitate optimized implementation of risk stratification, risk-adapted screening, and counseling as an integrated workflow, reliance on specialized, interdisciplinary centers (analogous to centers for breast/ovarian cancer) is recommended. However, the financial sustainability of such comprehensive prevention centers is a central concern, and this strategy might not be feasible in many parts of the world. Investigation of the cost effectiveness of risk-adapted screening and prevention centers therefore remains crucial in order to inform broader adoption in public health care systems.

Importantly, the expansion of screening strategies for high-risk men should align with structured, risk-adapted screening in the general population to reduce overdiagnosis and overtreatment and to ensure that high-risk individuals are proactively reached. Beyond routine assessment of family history, eligible men should receive invitations to PSA testing, and testing should be performed only when indicated [13]. Ongoing trials are still investigating the appropriate age range and screening intervals, and the European Association of Urology has proposed a screening algorithm for the general population of men aged 50–70 yr [74,75].

## 5. Conclusions

We argue that even amidst research still investigating best-practice pathways for risk-adapted early detection of PCa, implementation of intensified screening for high-risk men is needed. We propose that genetic testing of index patients and appropriate cascade testing should become more broadly available. This testing should use established criteria with validated tools and proceed with standardized referrals to genetic counseling as necessary. Provider and patient education, together with dissemination of information about men's risk of cancer and the importance of communicating genetic test results to male relatives, are crucial. Importantly, men for whom high risk is identified should be offered risk-adapted PCa screening, possibly via specialized interdisciplinary PCa centers if available. A coordinated agenda covering research, financing, and implementation is essential to fill the evidence gaps for early detection of high-risk PCa. These efforts will require interdisciplinary collaboration among stakeholders, including clinicians, researchers, health insurance companies, regulatory authorities, patient advocates, and industry, to align evidence generation, secure sustainable funding, and facilitate successful long-term implementation of early detection programs.

### Author contributions:

*Concept and design:* Klett, Albers, Morgans.

*Acquisition of data:* None.

*Analysis and interpretation of data:* None.

*Drafting of the manuscript:* Klett.

*Critical revision of the manuscript for important intellectual content:* Albers, Kibel, Lakes, Rana, Serzan, Karger, Morgans.

*Statistical analysis:* None.

*Obtaining funding:* None.

*Administrative, technical, or material support:* None.

*Supervision:* Morgans.

*Other:* None.

**Financial disclosures:** Maike K. Klett certifies that all conflicts of interest, including specific financial interests and relationships and affiliations relevant to the subject matter or materials discussed in the manuscript (eg, employment/affiliation, grants or funding, consultancies, honoraria, stock ownership or options, expert testimony, royalties, or patents filed, received, or pending) are the following: Maike K. Klett reports funding from German Cancer Aid and being part of the Cancer Prevention Graduate school of the German Cancer Research Center.

**Funding/Support and role of the sponsor:** None.

**Use of generative AI and AI-assisted technologies:** During the preparation of this manuscript the authors used DeepL Write in order to improve the grammar and the flow of the text. After using this tool, the authors reviewed and edited the content as needed and take full responsibility for the content of the publication.

## References

- [1] Loeb S, Bjurlin MA, Nicholson J, et al. Overdiagnosis and overtreatment of prostate cancer. *Eur Urol* 2014;65:1046–55. <https://doi.org/10.1016/j.eururo.2013.12.062>.
- [2] Vickers AJ, Sjoberg DD, Ulmert D, et al. Empirical estimates of prostate cancer overdiagnosis by age and prostate-specific antigen. *BMC Med* 2014;12:26. <https://doi.org/10.1186/1741-7015-12-26>.
- [3] de Vos II, Meertens A, Hogenhout R, Remmers S, Roobol MJ. A detailed evaluation of the effect of prostate-specific antigen–based screening on morbidity and mortality of prostate cancer: 21-year follow-up results of the Rotterdam section of the European Randomised Study of Screening for Prostate Cancer. *Eur Urol* 2023;84:426–34. <https://doi.org/10.1016/j.eururo.2023.03.016>.
- [4] Arnsrud Godtman R, Holmberg E, Lilja H, Stranne J, Hugosson J. Opportunistic testing versus organized prostate-specific antigen screening: outcome after 18 years in the Göteborg randomized population-based prostate cancer screening trial. *Eur Urol* 2015;68:354–60. <https://doi.org/10.1016/j.eururo.2014.12.006>.
- [5] Mucci LA, Hjelmborg JB, Harris JR, et al. Familial risk and heritability of cancer among twins in Nordic countries. *JAMA* 2016;315:68–76. <https://doi.org/10.1001/jama.2015.17703>.
- [6] Clements MB, Vertosick EA, Guerrios-Rivera L, et al. Defining the impact of family history on detection of high-grade prostate cancer in a large multi-institutional cohort. *Eur Urol* 2022;82:163–9. <https://doi.org/10.1016/j.eururo.2021.12.011>.
- [7] Brandt A, Sundquist J, Hemminki K. Risk for incident and fatal prostate cancer in men with a family history of any incident and fatal cancer. *Ann Oncol* 2012;23:251–6. <https://doi.org/10.1093/annonc/mdr056>.
- [8] Marino F, Totaro A, Gandi C, et al. Germline mutations in prostate cancer: a systematic review of the evidence for personalized medicine. *Prostate Cancer Prostat Dis* 2023;26:655–64. <https://doi.org/10.1038/s41391-022-00609-3>.
- [9] McHugh JK, Bancroft EK, Saunders E, et al. Assessment of a polygenic risk score in screening for prostate cancer. *N Engl J Med* 2025;392:1406–17. <https://doi.org/10.1056/NEJMoa2407934>.
- [10] Wang A, Shen J, Rodriguez AA, et al. Characterizing prostate cancer risk through multi-ancestry genome-wide discovery of 187 novel risk variants. *Nat Genet* 2023;55:2065–74. <https://doi.org/10.1038/s41588-023-01534-4>.
- [11] Gong T, Jiang J, Uthayopas K, et al. Rare pathogenic structural variants show potential to enhance prostate cancer germline testing for African men. *Nat Commun* 2025;16:2400. <https://doi.org/10.1038/s41467-025-57312-9>.
- [12] Soh PXY, Mmekwa N, Petersen DC, et al. Prostate cancer genetic risk and associated aggressive disease in men of African ancestry. *Nat Commun* 2023;14:8037. <https://doi.org/10.1038/s41467-023-43726-w>.
- [13] Vickers A, O'Brien F, Montorsi F, et al. Current policies on early detection of prostate cancer create overdiagnosis and inequity with minimal benefit. *BMJ* 2023;381:e071082. <https://doi.org/10.1136/bmj-2022-071082>.
- [14] Zhu Q, Chen J, Liu H, et al. The efficacy and safety of PARP inhibitors in mCRPC with HRR mutation in second-line treatment: a systematic review and Bayesian network meta-analysis. *BMC Cancer* 2024;24:706. <https://doi.org/10.1186/s12885-024-12388-2>.
- [15] Carter HB, Helfand B, Mamawala M, et al. Germline mutations in ATM and BRCA1/2 are associated with grade reclassification in men on active surveillance for prostate cancer. *Eur Urol* 2019;75:743–9. <https://doi.org/10.1016/j.eururo.2018.09.021>.
- [16] de Bono J, Mateo J, Fizazi K, et al. Olaparib for metastatic castration-resistant prostate cancer. *N Engl J Med* 2020;382:2091–102. <https://doi.org/10.1056/NEJMoa1911440>.
- [17] Gandaglia G, Leni R, Bray F, et al. Epidemiology and prevention of prostate cancer. *Eur Urol Oncol* 2021;4:877–92. <https://doi.org/10.1016/j.euo.2021.09.006>.
- [18] Beebe-Dimmer JL, Kapron AL, Fraser AM, Smith KR, Cooney KA. Risk of prostate cancer associated with familial and hereditary cancer syndromes. *J Clin Oncol* 2020;38:1807–13. <https://doi.org/10.1200/JCO.19.02808>.
- [19] Barber L, Gerke T, Markt SC, et al. Family history of breast or prostate cancer and prostate cancer risk. *Clin Cancer Res* 2018;24:5910–7. <https://doi.org/10.1158/1078-0432.Ccr-18-0370>.
- [20] Xu X, Kharazmi E, Tian Y, et al. Risk of prostate cancer in relatives of prostate cancer patients in Sweden: a nationwide cohort study. *PLoS Med* 2021;18:e1003616. <https://doi.org/10.1371/journal.pmed.1003616>.
- [21] PDQ Cancer Genetics Editorial Board. PDQ genetics of prostate cancer. Bethesda, MD: National Cancer Institute; 2025. <https://www.cancer.gov/types/prostate/hp/prostate-genetics-pdq>.

- [22] Daly MB, Pal T, AlHilli Z, et al. NCCN clinical practice guidelines in oncology (NCCN guidelines®). Genetic/familial high-risk assessment: breast, ovarian, pancreatic, and prostate Version 1.2026. Plymouth Meeting, PA: National Comprehensive Cancer Network; 2025.
- [23] Li S, Silvestri V, Leslie G, et al. Cancer risks associated with BRCA1 and BRCA2 pathogenic variants. *J Clin Oncol* 2022;40:1529–41. <https://doi.org/10.1200/jco.21.02112>.
- [24] Ewing CM, Ray AM, Lange EM, et al. Germline mutations in HOXB13 and prostate-cancer risk. *N Engl J Med* 2012;366:141–9. <https://doi.org/10.1056/NEJMoa1110000>.
- [25] Nyberg T, Tischkowitz M, Antoniou AC. BRCA1 and BRCA2 pathogenic variants and prostate cancer risk: systematic review and meta-analysis. *Br J Cancer* 2022;126:1067–81. <https://doi.org/10.1038/s41416-021-01675-5>.
- [26] Nyberg T, Frost D, Barrowdale D, et al. Prostate cancer risks for male BRCA1 and BRCA2 mutation carriers: a prospective cohort study. *Eur Urol* 2020;77:24–35. <https://doi.org/10.1016/j.eururo.2019.08.025>.
- [27] Pritchard CC, Mateo J, Walsh MF, et al. Inherited DNA-repair gene mutations in men with metastatic prostate cancer. *N Engl J Med* 2016;375:443–53. <https://doi.org/10.1056/NEJMoa1603144>.
- [28] Castro E, Romero-Laorden N, del Pozo A, et al. PRORPAIR-B: a prospective cohort study of the impact of germline DNA repair mutations on the outcomes of patients with metastatic castration-resistant prostate cancer. *J Clin Oncol* 2019;37:490–503. <https://doi.org/10.1200/jco.18.00358>.
- [29] Darst BF, Saunders E, Dadaev T, et al. Germline sequencing analysis to inform clinical gene panel testing for aggressive prostate cancer. *JAMA Oncol* 2023;9:1514–24. <https://doi.org/10.1001/jamaoncol.2023.3482>.
- [30] Nicolosi P, Ledet E, Yang S, et al. Prevalence of germline variants in prostate cancer and implications for current genetic testing guidelines. *JAMA Oncol* 2019;5:523–8. <https://doi.org/10.1001/jamaoncol.2018.6760>.
- [31] Conti DV, Darst BF, Moss LC, et al. Trans-ancestry genome-wide association meta-analysis of prostate cancer identifies new susceptibility loci and informs genetic risk prediction. *Nat Genet* 2021;53:65–75. <https://doi.org/10.1038/s41588-020-00748-0>.
- [32] Zhang Z, Zhang Y, Stopsack KH, et al. Identifying patients at risk of early lethal prostate cancer by integrating family history, polygenic risk score, rare variants in DNA repair genes, and lifestyle factors. *Eur Urol Oncol*. In press. <https://doi.org/10.1016/j.euo.2025.03.008>.
- [33] Siegel RL, Kratzer TB, Giaquinto AN, Sung H, Jemal A. Cancer statistics, 2025. *CA Cancer J Clin* 2025;75(1):10–45. <https://doi.org/10.3322/caac.21871>.
- [34] Sung H, Ferlay J, Siegel RL, et al. Global cancer statistics 2020: GLOBOCAN estimates of incidence and mortality worldwide for 36 cancers in 185 countries. *CA Cancer J Clin* 2021;71:209–49. <https://doi.org/10.3322/caac.21660>.
- [35] Krimphove MJ, Cole AP, Fletcher SA, et al. Evaluation of the contribution of demographics, access to health care, treatment, and tumor characteristics to racial differences in survival of advanced prostate cancer. *Prostate Cancer Prostat Dis* 2019;22:125–36. <https://doi.org/10.1038/s41391-018-0083-4>.
- [36] Nyame YA, Cooperberg MR, Cumberbatch MG, et al. Deconstructing, addressing, and eliminating racial and ethnic inequities in prostate cancer care. *Eur Urol* 2022;82:341–51. <https://doi.org/10.1016/j.eururo.2022.03.007>.
- [37] Ndugga-Kabuye MK, Issaka RB. Inequities in multi-gene hereditary cancer testing: lower diagnostic yield and higher VUS rate in individuals who identify as Hispanic, African or Asian and Pacific Islander as compared to European. *Fam Cancer* 2019;18:465–9. <https://doi.org/10.1007/s10689-019-00144-6>.
- [38] Chen E, Facio FM, Aradhya KW, et al. rates and classification of variants of uncertain significance in hereditary disease genetic testing. *JAMA Netw Open* 2023;6:e2339571. <https://doi.org/10.1001/jamanetworkopen.2023.39571>.
- [39] Thakker S, Loeb S, Giri VN, Bjurlin MA, Attitudes MRS. perceptions, and use of cancer-based genetic testing among healthy U.S. adults and those with prostate or breast/ovarian cancer. *Urol Pract* 2023;10:26–32. <https://doi.org/10.1097/upj.0000000000000352>.
- [40] Childers KK, Maggard-Gibbons M, Macinko J, Childers CP. National distribution of cancer genetic testing in the United States: evidence for a gender disparity in hereditary breast and ovarian cancer. *JAMA Oncol* 2018;4:876–9. <https://doi.org/10.1001/jamaoncol.2018.0340>.
- [41] Jeong GW, Shin W, Lee DO, et al. Uptake of family-specific mutation genetic testing among relatives of patients with ovarian cancer with BRCA1 or BRCA2 mutation. *Cancer Res Treat* 2021;53:207–11. <https://doi.org/10.4143/crt.2020.364>.
- [42] Hage Chehade C, Jo Y, Gebrael G, et al. Trends and disparities in next-generation sequencing in metastatic prostate and urothelial cancers. *JAMA Netw Open* 2024;7:e2423186. <https://doi.org/10.1001/jamanetworkopen.2024.23186>.
- [43] Daly MB. The impact of social roles on the experience of men in BRCA1/2 families: implications for counseling. *J Genet Counsel* 2009;18:42–8. <https://doi.org/10.1007/s10897-008-9183-y>.
- [44] Vaidya V, Partha G, Karmakar M. Gender differences in utilization of preventive care services in the United States. *J Womens Health* 2012;21:140–5. <https://doi.org/10.1089/jwh.2011.2876>.
- [45] Vargas G, Prunier L, Borus J. Gender differences in routine health maintenance examinations before and during the COVID-19 pandemic. *J Adolesc Health* 2023;72:300–2. <https://doi.org/10.1016/j.jadohealth.2022.09.031>.
- [46] Teo CH, Ng CJ, Booth A, White A. Barriers and facilitators to health screening in men: a systematic review. *SocSciMed* 2016;165:168–76. <https://doi.org/10.1016/j.socscimed.2016.07.023>.
- [47] Montgomery SV, Barsevick AM, Egleston BL, et al. Preparing individuals to communicate genetic test results to their relatives: report of a randomized control trial. *Fam Cancer* 2013;12:537–46. <https://doi.org/10.1007/s10689-013-9609-z>.
- [48] Daly MB, Montgomery S, Bingler R, Ruth K. Communicating genetic test results within the family: is it lost in translation? A survey of relatives in the randomized six-step study. *Fam Cancer* 2016;15:697–706. <https://doi.org/10.1007/s10689-016-9889-1>.
- [49] Blomen CL, Pott A, Volk AE, Budäus L, Witzel I. Communication processes about predictive genetic testing within high-risk breast cancer families: a two-phase study design. *Sci Rep* 2021;11:20178. <https://doi.org/10.1038/s41598-021-98737-8>.
- [50] Rauscher EA, Dean M. “I’ve just never gotten around to doing it”: Men’s approaches to managing BRCA-related cancer risks. *Patient Educ Counsel* 2018;101:340–5. <https://doi.org/10.1016/j.pec.2017.07.015>.
- [51] Graves KD, Gatammah R, Peshkin BN, et al. BRCA1/2 genetic testing uptake and psychosocial outcomes in men. *Fam Cancer* 2011;10:213–23. <https://doi.org/10.1007/s10689-011-9425-2>.
- [52] Gorday W, Sadrzadeh H, de Koning L, Naugler C. Association of sociodemographic factors and prostate-specific antigen (PSA) testing. *Clin Biochem* 2014;47:164–9. <https://doi.org/10.1016/j.clinbiochem.2014.08.006>.
- [53] Fedewa SA, Ward EM, Brawley O, Jemal A. Recent patterns of prostate-specific antigen testing for prostate cancer screening in the United States. *JAMA Intern Med* 2017;177:1040–2. <https://doi.org/10.1001/jamainternmed.2017.0340>.
- [54] Leitlinienprogramm Onkologie. S3-Leitlinie Prostatakarzinom, Langversion 8.0. <https://www.leitlinienprogramm-onkologie.de/leitlinien/prostatakarzinom>.
- [55] Cornford P, Tilki D, van den Bergh RCN, et al. EAU-EANM-ESTRO-ESUR-ISUP-SIOG guidelines on prostate cancer. Arnhem, The Netherlands: European Association of Urology; 2025.
- [56] Bancroft EK, Page EC, Brook MN, et al. The psychosocial impact of prostate cancer screening for BRCA1 and BRCA2 carriers. *BJU Int* 2024;134:484–500. <https://doi.org/10.1111/bju.16432>.
- [57] Bancroft EK, Saya S, Page EC, et al. Psychosocial impact of undergoing prostate cancer screening for men with BRCA 1 or BRCA 2 mutations. *BJU Int* 2019;123:284–92.
- [58] Dwyer AA, Hesse-Biber S, Shea H, Zeng Z, Yi S. Coping response and family communication of cancer risk in men harboring a BRCA mutation: a mixed methods study. *Psycho-Oncology* 2022;31:486–95. <https://doi.org/10.1002/pon.5831>.
- [59] Alterbeck M, Järbur E, Thimansson E, et al. Designing and implementing a population-based organised prostate cancer testing programme. *Eur Urol Focus* 2022;8:1568–74. <https://doi.org/10.1016/j.euf.2022.06.008>.
- [60] Zhang L, Carvalho AL, Mosquera I, et al. An international consensus on the essential and desirable criteria for an ‘organized’ cancer screening programme. *BMC Med* 2022;20:101. <https://doi.org/10.1186/s12916-022-02291-7>.
- [61] Bellcross C, Hermstad A, Tallo C, Stanislaw C. Validation of version 3.0 of the Breast Cancer Genetics Referral Screening Tool (B-RST™). *Genet Med* 2019;21:181–4. <https://doi.org/10.1038/s41436-018-0020-x>.

- [62] Giri VN, Walker A, Gross L, et al. Helix: a digital tool to address provider needs for prostate cancer genetic testing in clinical practice. *Clin Genitourin Cancer* 2022;20:e104–13. <https://doi.org/10.1016/j.clgc.2021.11.009>.
- [63] National Cancer Institute. Speaking with your family. <https://ccr.cancer.gov/surgical-oncology-program/clinical-team/speaking-with-your-family>.
- [64] Vlaming M, Bleiker EMA, van Oort IM, Kiemeny LALM, Ausems MGEM. Mainstream germline genetic testing in men with metastatic prostate cancer: design and protocol for a multicenter observational study. *BMC Cancer* 2022;22:1365. <https://doi.org/10.1186/s12885-022-10429-2>.
- [65] Loeb S, Cheng HH, Leader A, et al. Technology-enhanced Acceleration of Germline Evaluation for Therapy (TARGET): a randomized controlled trial of a pretest patient-driven webtool vs. genetic counseling for prostate cancer germline testing. *Contemp Clin Trials* 2022;119:106821. <https://doi.org/10.1016/j.cct.2022.106821>.
- [66] Vickers AJ, Ulmert D, Sjoberg DD, et al. Strategy for detection of prostate cancer based on relation between prostate specific antigen at age 40–55 and long term risk of metastasis: case-control study. *BMJ* 2013;346:f2023. <https://doi.org/10.1136/bmj.f2023>.
- [67] Kovac E, Carlsson SV, Lilja H, et al. Association of baseline prostate-specific antigen level with long-term diagnosis of clinically significant prostate cancer among patients aged 55 to 60 years: a secondary analysis of a cohort in the Prostate, Lung, Colorectal, and Ovarian (PLCO) cancer screening trial. *JAMA Netw Open* 2020;3:e1919284. <https://doi.org/10.1001/jamanetworkopen.2019.19284>.
- [68] Eldred-Evans D, Burak P, Connor MJ, et al. Population-based prostate cancer screening with magnetic resonance imaging or ultrasonography: the IP1-PROSTAGRAM study. *JAMA Oncol* 2021;7:395–402. <https://doi.org/10.1001/jamaoncol.2020.7456>.
- [69] Kachuri L, Hoffmann TJ, Jiang Y, et al. Genetically adjusted PSA levels for prostate cancer screening. *Nat Med* 2023;29:1412–23. <https://doi.org/10.1038/s41591-023-02277-9>.
- [70] Moses KA, Sprenkle PC, Bahler C, et al. NCCN clinical practice guidelines in oncology (NCCN guidelines®): prostate cancer early detection Version 2.2025. Plymouth Meeting, PA: National Comprehensive Cancer Network; 2025.
- [71] Stroomberg HV, Brasso K, Blak AA, Byrjalsen A, van Overeem HT, Røder A. Prostate-specific antigen screening at low thresholds of men with pathogenic BRCA1/2 variants. *Prostate Cancer Prostat Dis* 2025;28:894–901. <https://doi.org/10.1038/s41391-025-00938-z>.
- [72] Lakes J, Boschheidgen M, Antoch G, et al. Genetic testing and imaging in men with familial history or genetic predisposition of prostate cancer—introducing the prospective “ProFam-Risk” study. *Eur Urol Open Sci* 2026;84:13–21. <https://doi.org/10.1016/j.euro.2025.12.018>.
- [73] Krilaviciute A, Becker N, Lakes J, et al. Digital rectal examination is not a useful screening test for prostate cancer. *Eur Urol Oncol* 2023;6:566–73. <https://doi.org/10.1016/j.euo.2023.09.008>.
- [74] Van Poppel H, Hogenhout R, Albers P, van den Bergh RCN, Barentsz JO, Roobol MJ. A European model for an organised risk-stratified early detection programme for prostate cancer. *Eur Urol Oncol* 2021;4:731–9. <https://doi.org/10.1016/j.euo.2021.06.006>.
- [75] Van Poppel H, Hogenhout R, Albers P, van den Bergh RCN, Barentsz JO, Roobol MJ. Early detection of prostate cancer in 2020 and beyond: facts and recommendations for the European Union and the European Commission. *Eur Urol* 2021;79:327–9. <https://doi.org/10.1016/j.eururo.2020.12.010>.